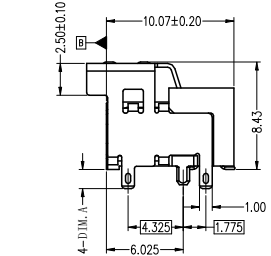
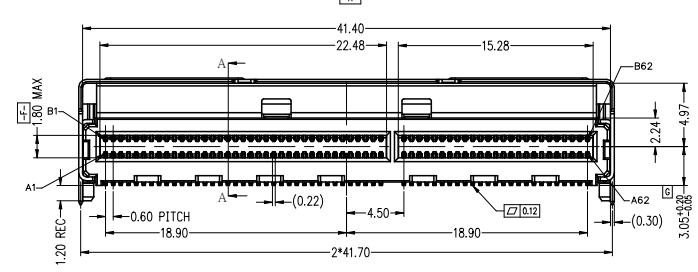
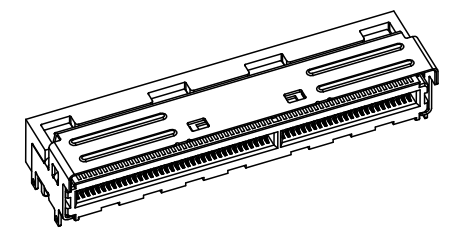
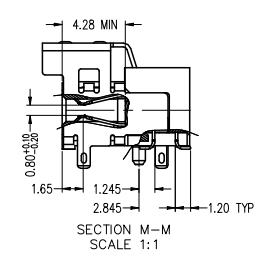
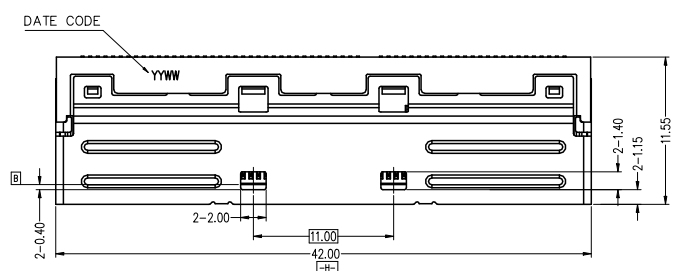
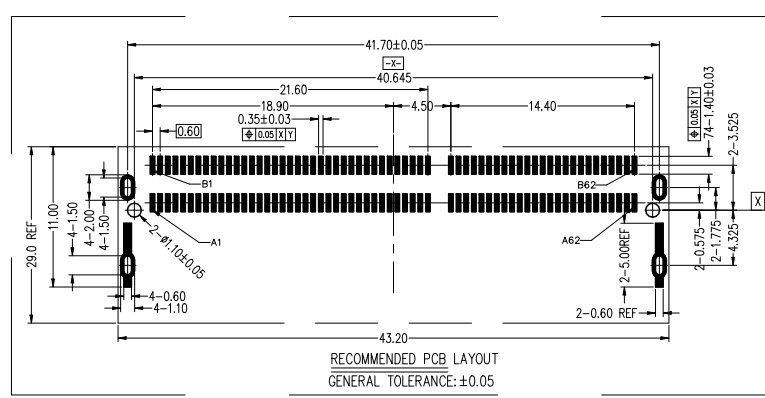
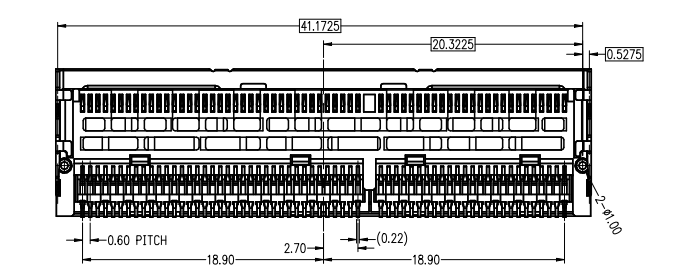


1	2	3	4	5	6	7	8				
THIS DRAWING AND THE DATA DISCLOSED HEREIN OR HEREWITH IS NOT TO BE REPRODUCED USED OR DISCLOSED IN WHOLE OR IN PART TO ANYONE WITHOUT THE PERMISSION OF JESS-LINK PRODUCTS CO.,LTD.(JPC)				CUSTOMER DRAWING DRWC-009991		REV.	ECN NO.	DESCRIPTION	MDF'D	APP'D	DATE
						01		INITIAL DESIGN	Veera	Jason	02/06/2024
						02					
						03					



NOTE:

- MATERIAL:
HOUSING: HIGH TEMPERATURE PLASTIC UL 94 V-0;
MOLDING: HIGH TEMPERATURE PLASTIC UL 94 V-0;
TERMINAL: COPPER ALLOY(T=0.20mm)
SHELL: STAINLESS STEEL(T=0.30mm)
- FLASH:
TERMINAL: CONTACT AREA: GOLD 30U" MIN
TAIL AREA: SEPARATED GOLD PLATING 1-5U" MIN
UNDER PLATING: NICKEL 100U" MIN
SHELL: NICKEL 100U" MIN
- THIS PRODUCT DOESN'T CONTAIN ENVIRONMENTAL HAZARDOUS MATERIALS PER DIRECTIVE 2002/95/EC FOR ROHS AND PER IEC 61249-2-21 FOR HALOGEN FREE COMPLIANT



NO. OF PINS. MCIO P947A 124 3 3 1R-0
124: 124 PIN. RECEPTACLE

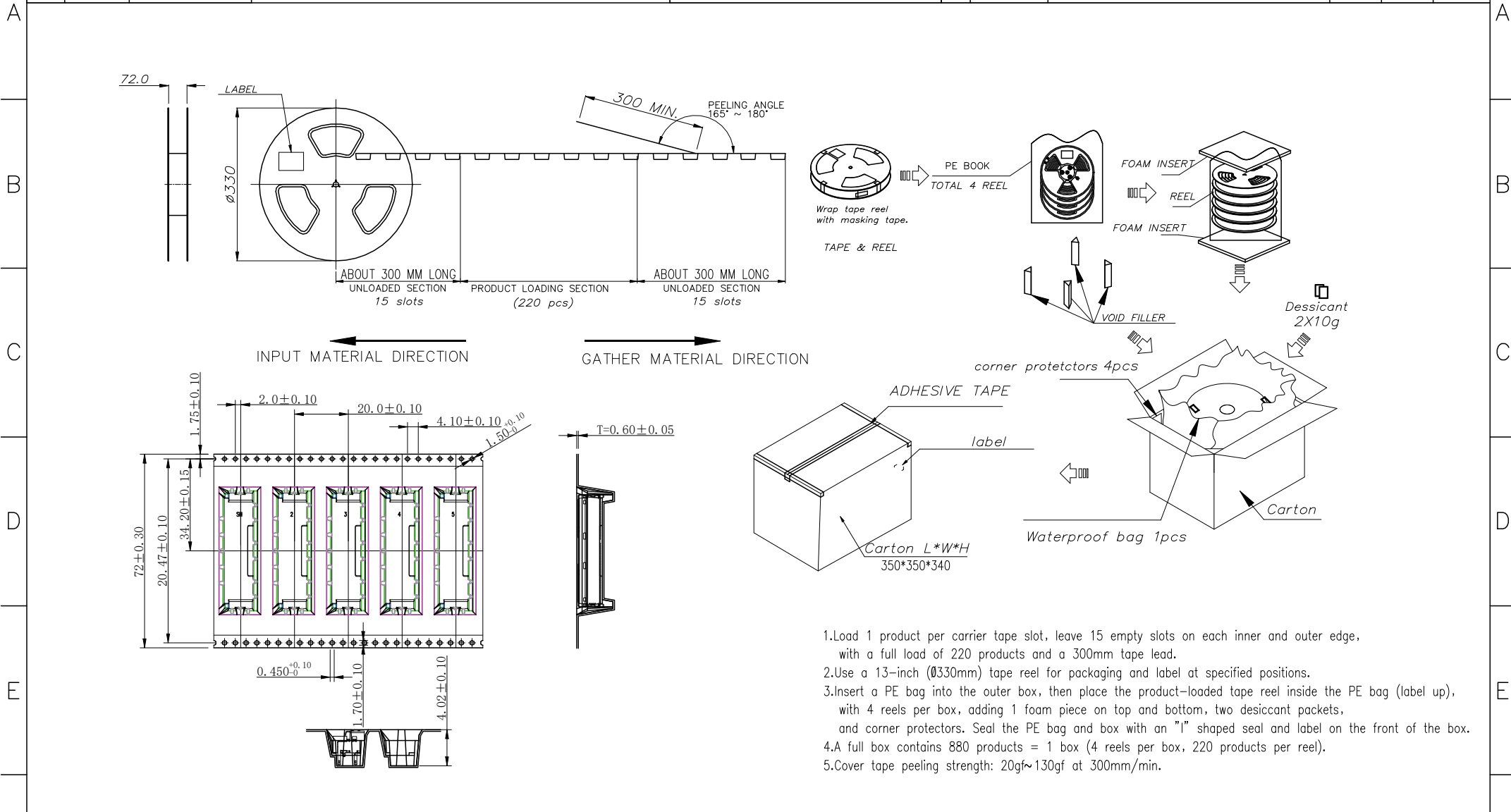
CONNECTOR STYLE
3: RIGHT ANGLE RECEPTACLE

CONTACT PLATING OPTION:
3: CONTACT AREA: GOLD 30u" MIN
SOLDERING AREA: MATTE TIN 100~200u",
OVERALL NICKEL 30~100u" UNDER PLATING

PACKAGE OPTION:
R: TAPE REEL
SHELL PIN LENGTH
DIM A 1: 1.5MM
2: 2.2MM

RoHS COMPLIANT	HALOGEN FREE	Unit: mm(inch)	PROJECTION	JPC connectivity		TITLE MCIO 16X RIGHT ANGLE CONNECTOR	PD./FILE NO. XXXXXXXXXX
		GENERAL TOLERANCES: (UNLESS SPECIFIED)	D.R. 02/06/2024 Veera				REV. 01
		0 ±1 (0.039)	CH.K 02/06/2024 Albert	SCALE 1:1	SIZE A4	PART NO. P947A124331R-0	X-XXXX
		0.0 ±1.5 (0.012)	APV.D 02/06/2024 Jason				REV. 01
		0.000±.15(0.006)					SHEET 1 OF 2
		0 ±2					
		0 ±1					

1	2	3	4	5	6	7	8				
THIS DRAWING AND THE DATA DISCLOSED HEREIN OR HEREWITH IS NOT TO BE REPRODUCED USED OR DISCLOSED IN WHOLE OR IN PART TO ANYONE WITHOUT THE PERMISSION OF JESS-LINK PRODUCTS CO.,LTD.(JPC)				CUSTOMER DRAWING		REV.	ECN NO.	DESCRIPTION	MDF'D	APP'D	DATE
				DRWC-009991		01		INITIAL DESIGN	Veera	Jason	02/06/2024
						02					
						03					



- 1.Load 1 product per carrier tape slot, leave 15 empty slots on each inner and outer edge, with a full load of 220 products and a 300mm tape lead.
- 2.Use a 13-inch (Ø330mm) tape reel for packaging and label at specified positions.
- 3.Insert a PE bag into the outer box, then place the product-loaded tape reel inside the PE bag (label up), with 4 reels per box, adding 1 foam piece on top and bottom, two desiccant packets, and corner protectors. Seal the PE bag and box with an "I" shaped seal and label on the front of the box.
- 4.A full box contains 880 products = 1 box (4 reels per box, 220 products per reel).
- 5.Cover tape peeling strength: 20gf~130gf at 300mm/min.

RoHS COMPLIANT	HALOGEN FREE	Unit: mm(inch)	PROJECTION	JPC connectivity	
		GENERAL TOLERANCES: (UNLESS SPECIFIED)	D.R. 02/06/2024	TITLE	PD./FILE NO.
		0 =±1 (0.039)	Veera	MCIO 16X RIGHT ANGLE CONNECTOR	XXXXXXXXXX
		0.0 =±.5 (0.02)	CH.K 02/06/2024		X-XXXX
0.00 =±.3 (0.012)	Albert	SCALE	SIZE	PART NO.	REV. 01
0.000=±.15(0.006)	APV.D 02/06/2024	1:1	A4	P947A124331R-0	SHEET 1 OF 2
0° =± 2°	Jason				
0.0° =± 1°					